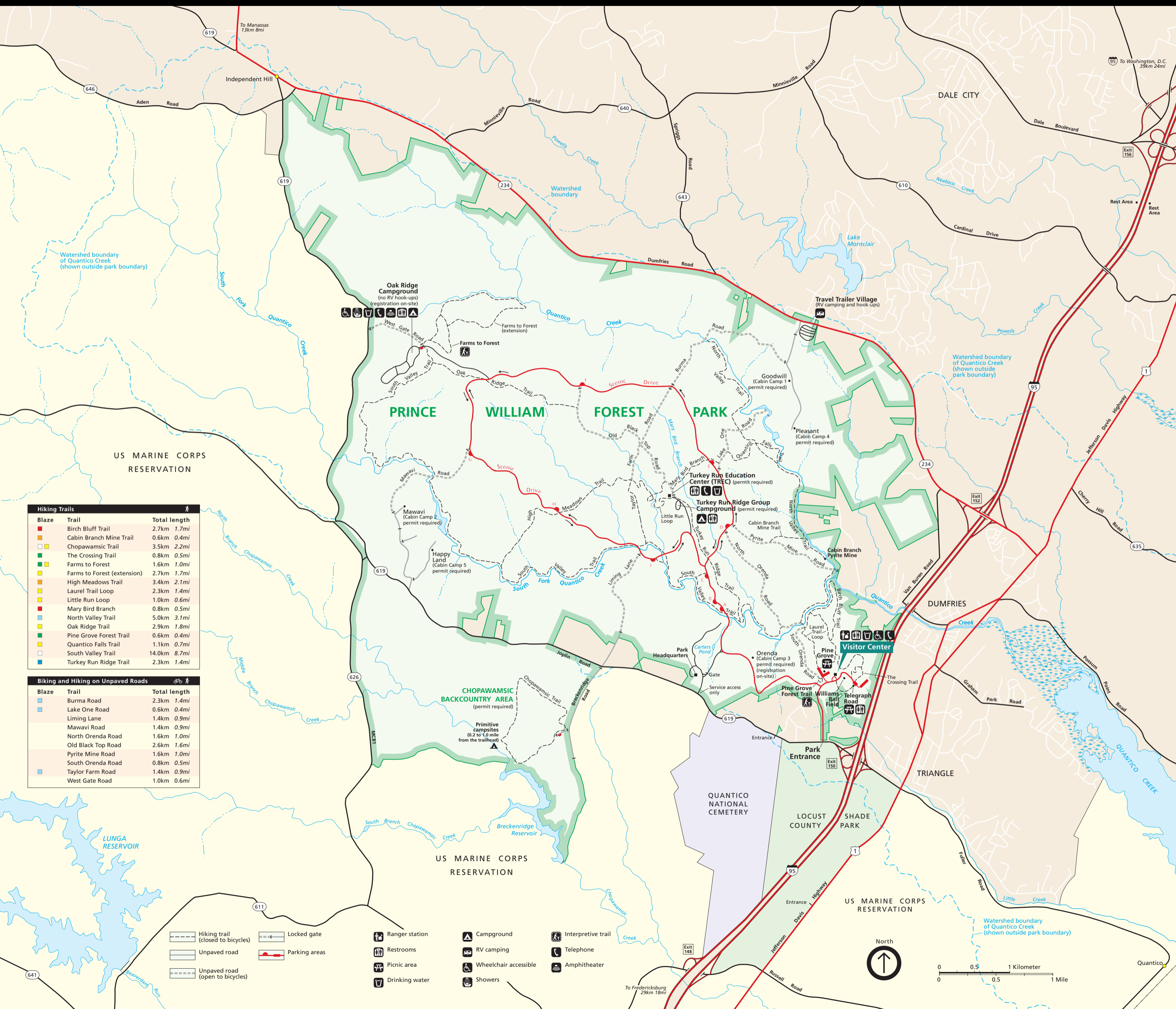


Prince William Forest Park



Hiking Trails		
Blaze	Trail	Total length
■	Birch Bluff Trail	2.7km 1.7mi
■	Cabin Branch Mine Trail	0.6km 0.4mi
■	Chopawamsic Trail	3.5km 2.2mi
■	The Crossing Trail	0.8km 0.5mi
■	Farms to Forest	1.6km 1.0mi
■	Farms to Forest (extension)	2.7km 1.7mi
■	High Meadows Trail	3.4km 2.1mi
■	Laurel Trail Loop	2.3km 1.4mi
■	Little Run Loop	1.0km 0.6mi
■	Mary Bird Branch	0.8km 0.5mi
■	North Valley Trail	5.0km 3.1mi
■	Oak Ridge Trail	2.9km 1.8mi
■	Pine Grove Forest Trail	0.6km 0.4mi
■	Quantico Falls Trail	1.1km 0.7mi
■	South Valley Trail	14.0km 8.7mi
■	Turkey Run Ridge Trail	2.3km 1.4mi

Biking and Hiking on Unpaved Roads		
Blaze	Trail	Total length
■	Burma Road	2.3km 1.4mi
■	Lake One Road	0.6km 0.4mi
■	Liming Lane	1.4km 0.9mi
■	Mawavi Road	1.4km 0.9mi
■	North Orenda Road	1.6km 1.0mi
■	Old Black Top Road	2.6km 1.6mi
■	Pyrite Mine Road	1.6km 1.0mi
■	South Orenda Road	0.8km 0.5mi
■	Taylor Farm Road	1.4km 0.9mi
■	West Gate Road	1.0km 0.6mi

- Hiking trail (closed to bicycles)
- Locked gate
- Ranger station
- Campground
- Interpretive trail
- Unpaved road
- Parking areas
- Restrooms
- RV camping
- Telephone
- Unpaved road (open to bicycles)
- Picnic area
- Wheelchair accessible
- Amphitheater
- Drinking water
- Showers

North
↑

0 0.5 1 Kilometer
0 0.5 1 Mile